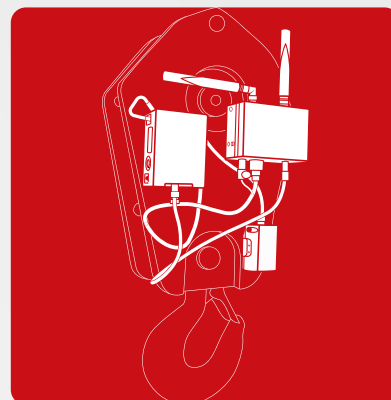
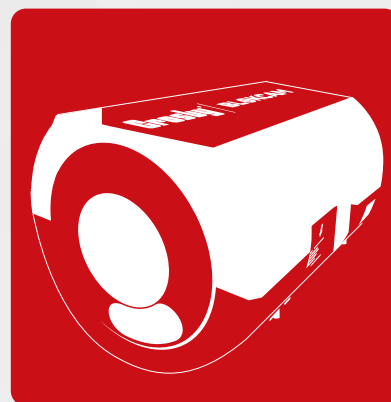


# CAMERA SYSTEMS

Advanced monitoring products to improve safety, communication and productivity at the work site.





**Crosby** | BLOKCAM

# BLOKCAM

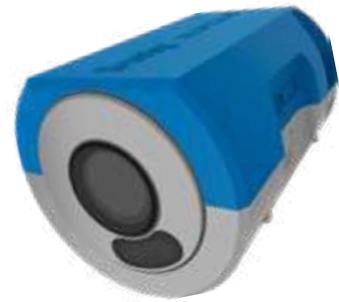
Improving safety, communication & productivity

## WHAT IS BLOKCAM?

BlokCam is a wireless system that can be quickly and easily deployed to the hook block or boom tip of a crane.

The sound and view from below the camera is then transmitted and received wirelessly via the antenna systems to a screen in the cab.

This allows the operator to see and hear the load and surroundings, giving an unobstructed, live, audio-visual feed of the critical areas that working in the blind would never allow.



## HOW BLOKCAM WORKS

### 1. On the hook block and/or boom tip

The sensor captures the audio-visual feed and sends it to the transmitter. The signal is then transmitted to a repeater on the jib, boom or cab.

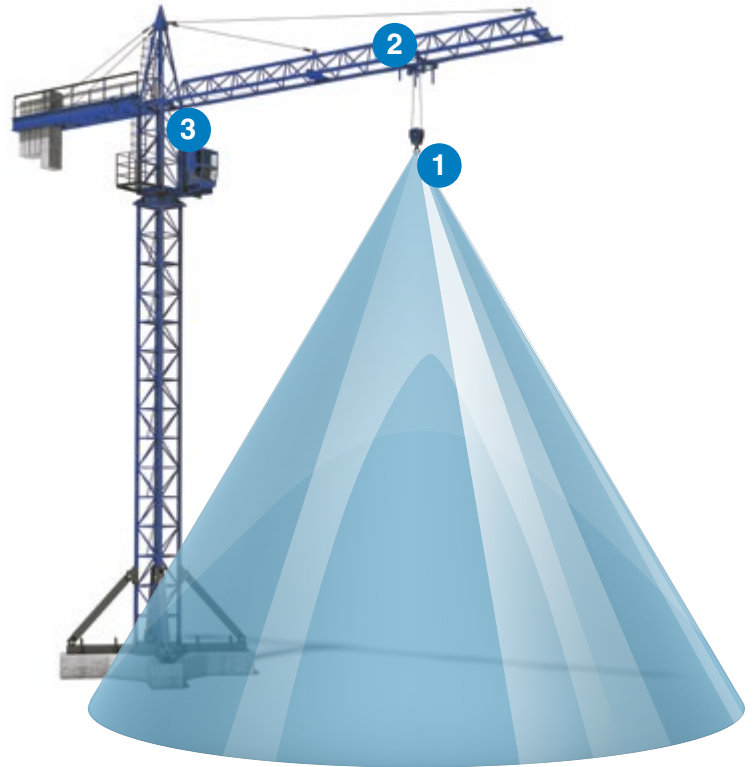
The battery powers both the transmitter and the sensor. Each component attaches magnetically and can be mounted on the block, including between the cheek plates and on the boom tip.

### 2. Repeater on the jib/boom and/or cab

The repeater receives the wireless signal from the transmitter and is relayed back to a monitor in the cab. The repeater position and configuration is dependent on the type of crane, type of jib/boom and length of jib/boom.

### 3. In the operator's cab

The live audio-visual feed is then processed and displayed on the screen positioned inside the cab, allowing the operator to see and hear live footage of everything below the camera.



## TESTIMONIALS

"Baker | DC and our crane operators have been using BlokCam cameras for more than 3 years. Our crane operators now are requesting BlokCams on cranes whenever their new projects start-up. On our Wharf project in Washington DC we had 5 tower cranes, each equipped with a BlokCam and Office Link. While the cameras allow our operators to safely and confidently make picks when in the blind, the Office Link and its ability to record the camera footage has proven to be invaluable at improving job-site efficiency and providing historical information for safety training and job-site documentation."



**Jason Rhine**  
Project Executive  
Baker | DC

"HTC started working with Crosby BlokCam in 2015 - on first impressions we were very impressed by the level of expertise and professionalism of this company. We are proud to work in partnership with Crosby BlokCam and are delighted with the service which we are able to provide to our customers. It is great to work with such a forward-thinking and proactive company. Crosby BlokCam's experience and knowledge of the crane industry has allowed them to develop and offer the highest quality system on the market. Therefore, we are looking forward to many more years of working together."



**Elliott Simpson**  
Accessories Manager  
WOLFF Onsite

"BlokCam is one of the best investments London Tower Cranes has made. The quality, ability, and value of their camera system is second to none. We have found the BlokCam to be an invaluable asset for the crane operators, lifting teams and business as a whole."



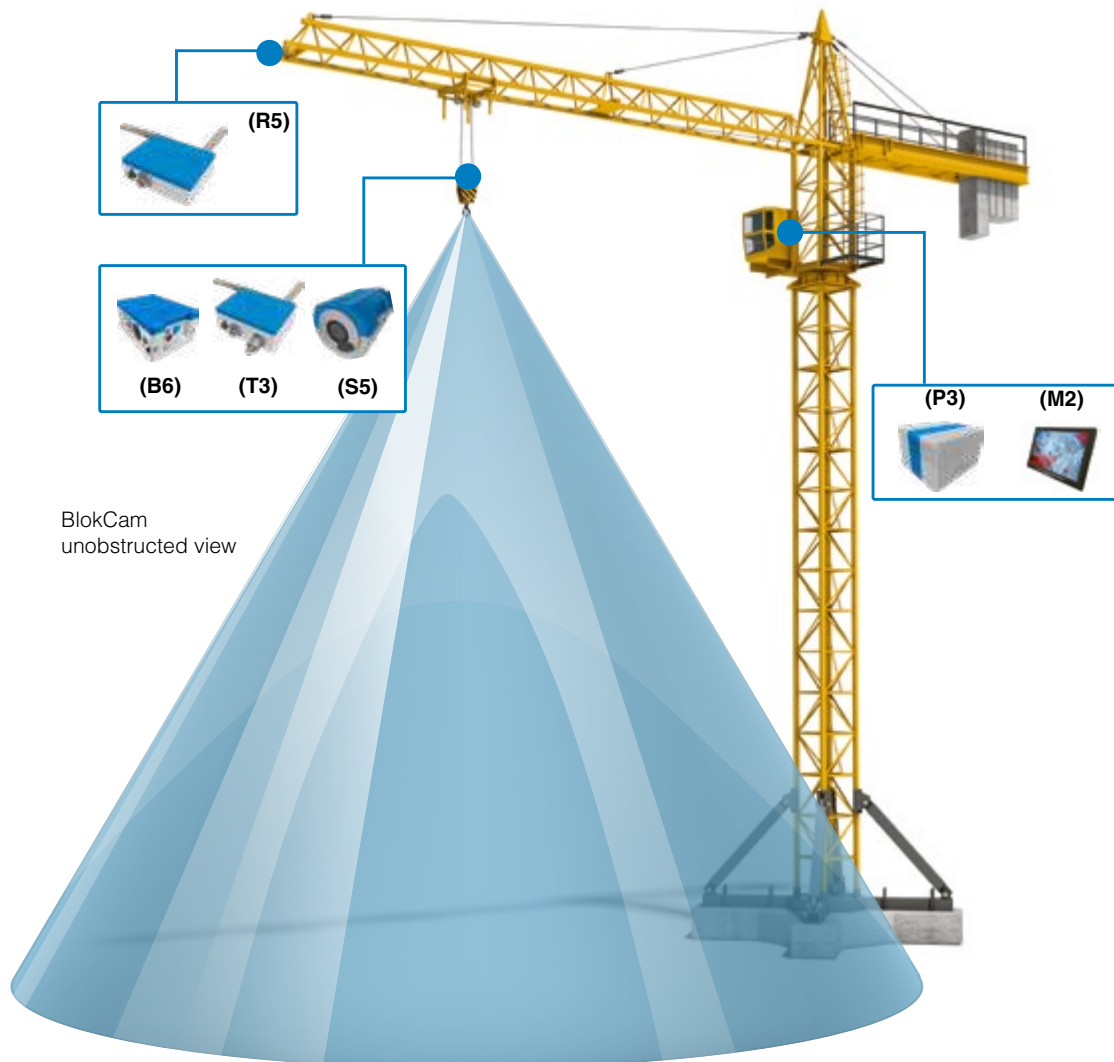
**Martin Harvey**  
Managing Director  
London Tower Cranes

# X3L CAMERA SYSTEM (PART NO. 7380008)

## TOWER CRANES

### Design Overview

- Easy and quick to install; can be fitted within an hour
- Uses high powered neodymium magnets
- The lens is auto-focus and always gives clear views of the load and surrounding area below the hook
- HD 1080p resolution
- Audio from sensor to cab
- Optional single and split screen mode with additional cameras
- Long range transmission<sup>5</sup>
- Record on loop for up to 30 days
- Purpose built aluminum housing
- Multiple built in lanyard anchors
- Safety lanyard provides secondary security tethering
- Hands-free operation
- Multi positional sensor for variable views
- LED indicators
- Two batteries per system
- Non hazardous battery
- 12 hour battery life<sup>3</sup>
- Multi-voltage AC and DC inputs
- Durable all-weather design, manufactured to IP67<sup>4</sup> rating
- -4°F to 131°F (-20°C to 55°C) operating temperature
- Optional mobile app and 4G live streaming<sup>2</sup>
- CE and FCC approved
- High quality industrial connectors
- Color coded connectors



More information, hook mounted safety system and accessories available online at [thecrosbygroup.com/blokcam](https://thecrosbygroup.com/blokcam).

Modular design, compatible across a wide variety of cranes <sup>1</sup>

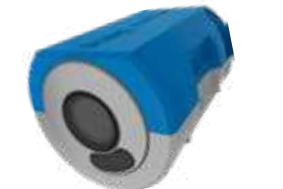


**WHAT'S INCLUDED**

**Sensor (S5)**

**Part No. 7370022**

The S5 is a 113° wide angle lens. The low profile design, tool free operation and rotatable lens allows for easy installation on any side of the hook block including in between the cheek plates.



**Transmitter (T3)**

**Part No. 7370023**

T3 dramatically improves the most important aspects of the BlokCam. The combination of performance, specification, aesthetics and 71mm low profile design make this a must for all crane operations. Connect up to two sensors.



**Battery (B6)**

**Part No. 7370032**

B6 is a non hazardous lithium 14.54v Battery Pack. The clever tool-free design and easy grip finger slots makes it easy to install, remove and charge. IP67.



**Charging Station (B6-CH3)**

**Part No. 7360033**

Our Li-Ion Charger is designed to improve the efficiency of your BlokCam Batteries and the performance of the camera system.



**Repeater (R5)**

**Part No. 7370020**

Depending on the crane type and required installation the Repeater is mounted on the jib, boom tip or cab. The Repeater has been specifically designed for fast, wireless, telescopic deployment.



**Monitor (M2)**

**Part No. 7360019**

Our HD Monitor is a 10.1in 16:9 LCD monitor with built in speakers and a HDMI input. It has a 1280 x 800 pixel panel with automatic brightness control.



**Processor (P3)**

**Part No. 7370029**

Our purpose built Processor can project multiple high definition images and audio's through a single HDMI lead with less than 0.2 seconds of latency. The design of the Processor accomodates multivoltage AC and DC inputs making your BlokCam system compatible across all types of cranes. The Processor also provides power to the monitor, eliminating the need for a secondary socket or power supply.



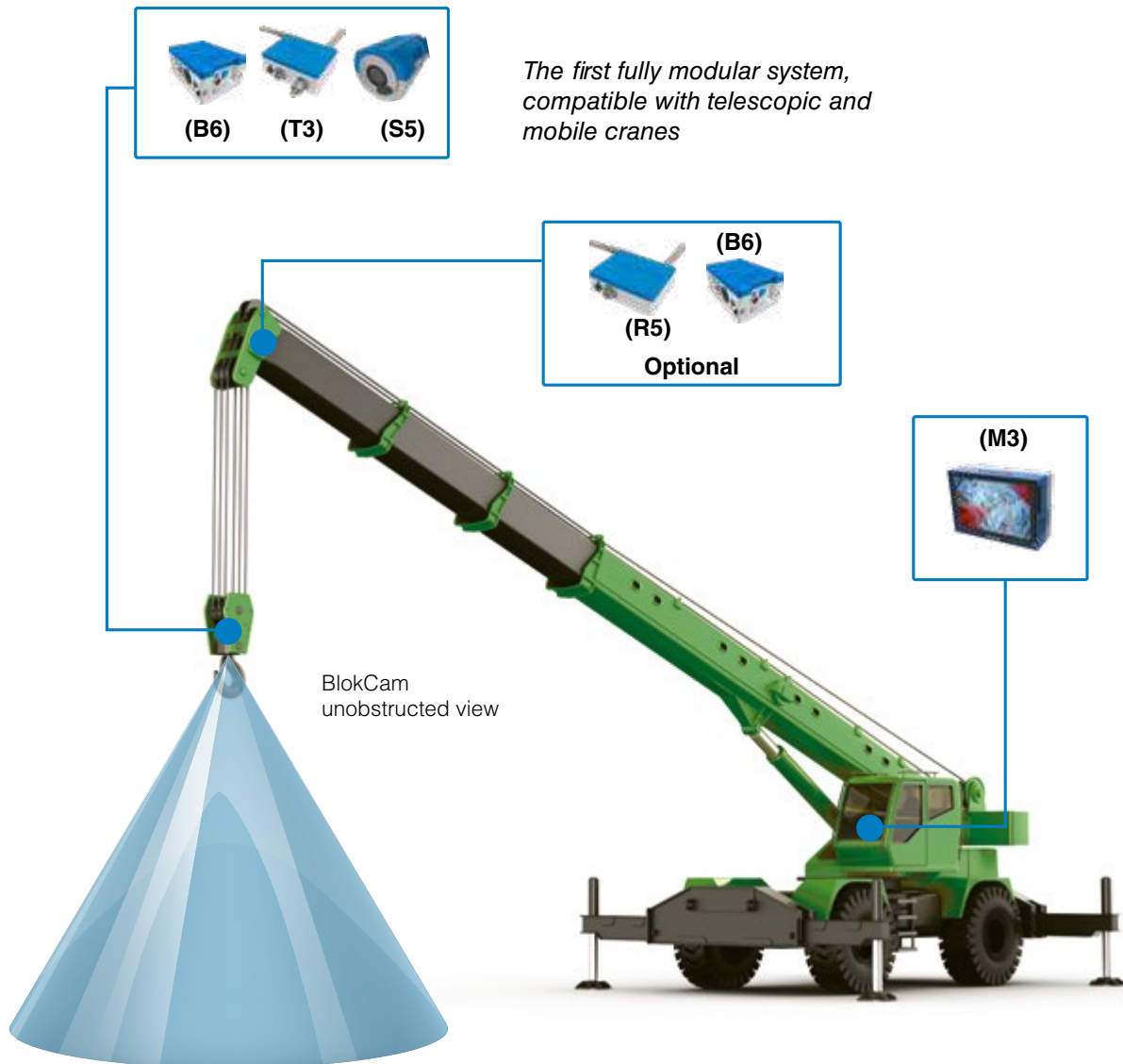
# M3L CAMERA SYSTEM (PART NO. 7380009)

## MOBILE & TELESCOPIC CRANES

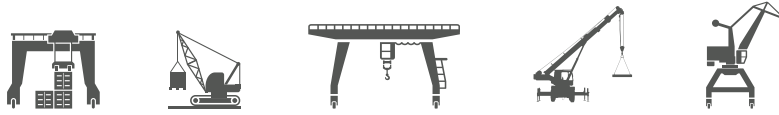
### Design Overview

- Specifically designed for the mobile and crawler market
- Can be installed and removed within 5 minutes
- Uses high powered neodymium magnets
- The lens is auto-focus and always gives clear views of the load and surrounding area below the hook
- HD 1080p resolution
- Audio from sensor to cab
- Long range transmission<sup>5</sup>
- Record on loop for up to 30 days
- Purpose built aluminum housing
- Multiple built in lanyard anchors
- Safety lanyard provides secondary security tethering
- Hands-free operation
- Multi positional sensor for variable views
- LED indicators
- Two batteries per system
- Non hazardous battery
- 12-hr battery life<sup>3</sup>
- Multi-voltage AC and DC inputs
- Durable all-weather design, manufactured to IP67<sup>4</sup> rating
- -4°F to 131°F (-20°C to 55°C) operating temperature
- Optional mobile app and 4G live streaming<sup>2</sup>
- CE and FCC approved
- High quality industrial connectors
- Color coded connectors

3



Modular design, compatible across a wide variety of cranes <sup>1</sup>



## WHAT'S INCLUDED

### Monitor (M3)

**Part No. 7370014**

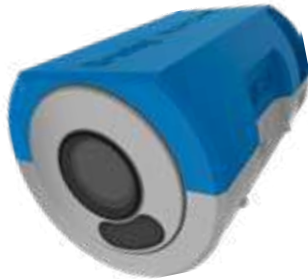
The M3 is an all in one display that combines a monitor, repeater and processor in to a purpose built fast fit system. The M3 has a HD display with built in speakers, automatic brightness control, less than 0.2 seconds of latency and multi-voltage AC and DC inputs.



### Sensor (S5)

**Part No. 7370022**

The S5 is a 113° wide angle lens. The low profile design, tool free operation and rotatable lens allows for easy installation on any side of the hook block including in between the cheek plates.



### Transmitter (T3)

**Part No. 7370023**

T3 dramatically improves the most important aspects of the BlokCam. The combination of performance, specification, aesthetics and 71mm low profile design make this a must for all crane operations. Connect up to two sensors.



### Battery (B6)

**Part No. 7370032**

B6 is a non hazardous lithium 14.54v Battery Pack. The clever tool-free design and easy grip finger slots makes it easy to install, remove and charge. IP67.



### Charging Station (B6-CH3)

**Part No. 7360033**

Our Li-Ion Charger is designed to improve the efficiency of your BlokCam Batteries and the performance of the camera system.



More information, hook mounted safety system and accessories available online at [thecrosbygroup.com/blokcam](https://thecrosbygroup.com/blokcam).

# BLOKCAM ACCESSORIES

3



**BlokCam Office Link (OL1)**  
**Part No. 7370015**

BlokCam Office Link allows the data from your BlokCam to be captured in a site office for site and crane monitoring and surveillance. Your host computer could monitor and download data from multiple systems.



**4G Router (30184)**  
**Part No. 7350026**

With a 4G router connected to your BlokCam system you can live stream crane footage and extract recordings from anywhere in the world <sup>2</sup>.



**V-Cam (VC4)**  
**Part No. 7370025**

The Versatile-Cam is our hardwired option, which gives you the ability to expand your BlokCam system to include additional sensors. The build quality of the VC4, coupled with its non-intrusive size and mounting versatility, means it can be deployed in seconds and used in a multitude of scenarios. Ideal for visual monitoring and data logging of the hoist drum, luffing drum, slew ring, tail swing, and the operator's cab.



**V-Cam (VC4a)**  
**Part No. 7370026**

The VC4a is our hardwired camera with a built in microphone, which is most commonly used for audio-visual monitoring and data logging of the operator's cab.



**BlokMag (BM1)**  
**Part No. 7370009**

Attach your crane camera system to a hook block with a curved surface. Flat, spherical, cylindrical, narrow, short or tall, our modular BlokMag system allows flat surfaces to magnetically mate with curved surfaces flawlessly.



**BlokLink**  
**Part No. 7370031**

Complete with hook and bow, attach your crane camera system to a crane where you cannot if the block has a curved surface. Flat, spherical, cylindrical, narrow, short or tall, our BlokLink is the solution to provide a flat surface for your BlokCam or BlokAlert.

More information, hook mounted safety system, and accessories available online at [thecrosbygroup.com/blokcam](http://thecrosbygroup.com/blokcam).

## REFERENCES

1. Subject to crane make/model
  2. Subject to availability of a suitable mobile network (data charges apply)
  3. Battery life varies by use and configuration
  4. IP67 rating excludes IP65 audio sensor and sounder
  5. Transmission distance may vary depending on the environment
- \*Actual product may differ from rendered image

**Safer lifts with block camera & alert systems**

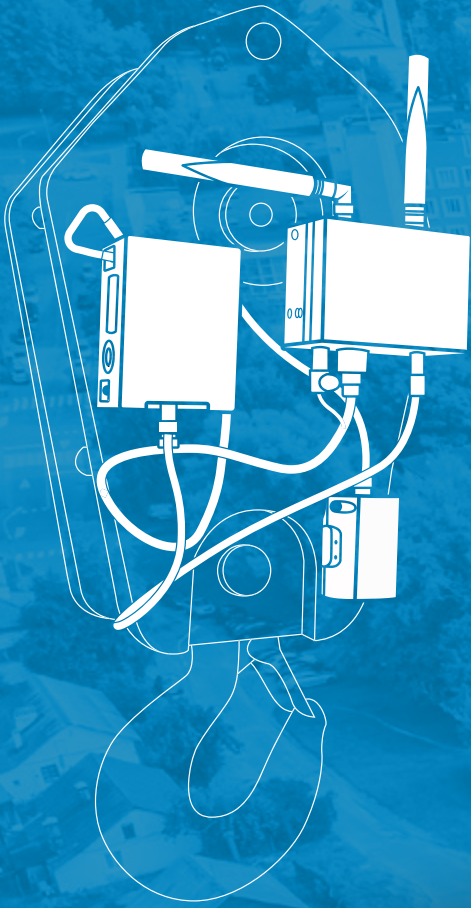
Peter Hind | Aaron Crank

Crosby BLOKCAM

## ON-DEMAND WEBINAR

Get an in-depth look at the latest Crosby BlokCam audio-visual technologies designed to improve safety and efficiency through enhanced crane operation awareness and communication.

Watch now at [thecrosbygroup.com/blokcam-webinar](http://thecrosbygroup.com/blokcam-webinar)



# BLOKCAM

## **IMPROVING SAFETY, COMMUNICATION & PRODUCTIVITY**

Systems and upgrades  
now available to order!



## WHAT IS BLOKALERT?

BlokAlert is a wireless, audio-visual warning system that can be quickly and easily deployed to the hook block of a crane.

When activated by the lifting crew, the BlokAlert receiver gives out a recognisable audio-visual signal that can be seen and heard by site personnel in proximity to the hook block or load.

This forewarns the workforce to the position and movements of the hook block, increases awareness and reduces the risk of being struck by the crane's hook block, lifting accessories or load.



## WHY BLOKALERT?



Traditionally, the distance between the horn, often located near the operator's cab, and the load is inconsistent and does not efficiently warn site personnel to the position of the hook block or load.

The same can be said for air horns or whistles when used by riggers. In both scenarios, the attention of the work force is diverted to where the sound is coming from, as opposed to the hazard.

Solution: Fit a warning system to the hook block. When activated, the consistent proximity between the hook block and the load enhances the efficiency of the warning system and draws attention to the hazard, not away from it.

## HOW BLOKALERT WORKS

### 1a The lifting crew/rigger

The handheld fob is activated by the riggers or lifting crew. When operated, the signal is transmitted to the receiver on the hook block of the crane.

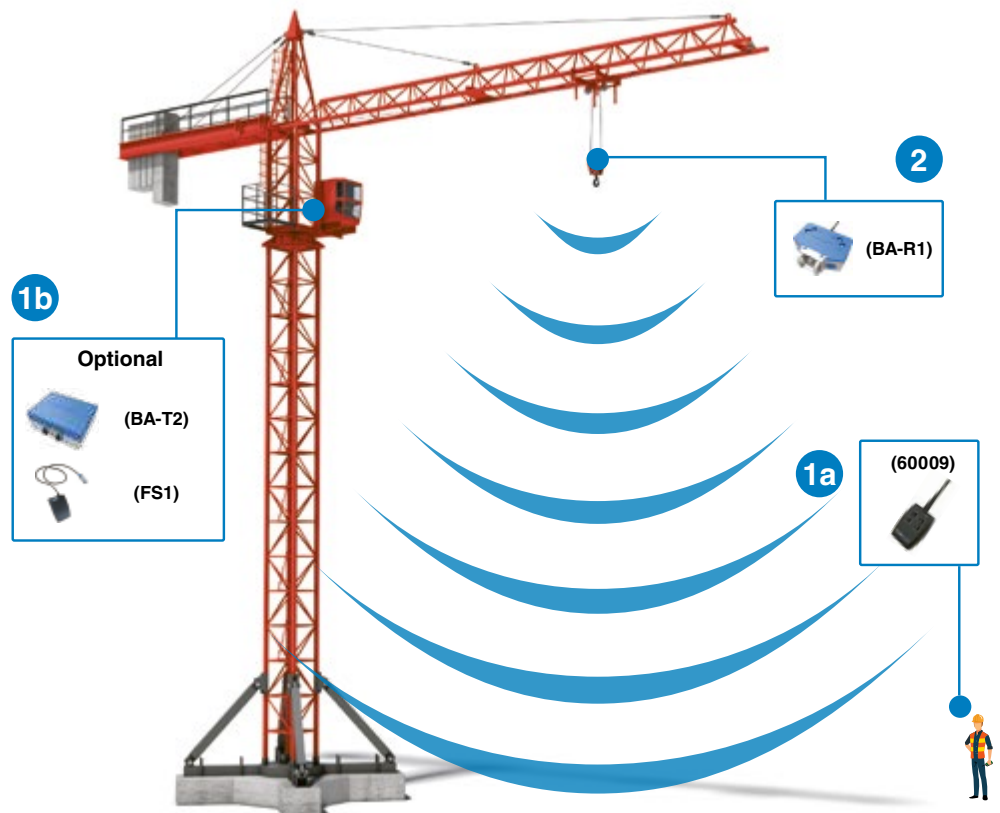
and/or

### 1b In the operator's cab

The transmitter is activated by a footswitch in the crane cab. When operated, the signal is transmitted to the receiver on the hook block of the crane.

### 2 On the hook block

On receipt of a signal from a transmitter, the Receiver is activated, alerting the workforce to the proximity of the hook block.



# BLOKALERT SYSTEM (PART NO. 7380000)

## Design Overview

- Uses high powered neodymium magnets
- Easy to install, remove, and charge
- Two handheld transmitters per system
- Easy to use, multifunction operation
- 2 x 78db – 107db electronic sounders
- 180° LED beacon
- Choice of four beacon colors ● ● ● ●
- Pair transceivers with the push of a button
- Built in Lithium Ion battery with 124-hr battery life<sup>3</sup>
- Built in, fold away carry handles
- Long range transmitter and receiver<sup>5</sup>
- Purpose built aluminum housing
- Built in lanyard anchors
- Safety lanyard provides secondary security tethering
- LED power indicator
- 3.39 inch low profile design
- Durable all-weather design, manufactured to IP67<sup>4</sup> rating
- 14°F to 122°F (-10°C to 50°C) operating temperature
- Easy access fuse
- High quality industrial charge connector
- Optional cab transmitter
- CE and FCC approved

Modular design, compatible across a wide variety of cranes <sup>1</sup>



## WHAT'S INCLUDED



### BlokAlert Receiver (BA-R1) Part No. 7370003

Along with the LED Beacon, the BlokAlert Receiver is capable of up to 528 different audible warnings. This audio-visual warning system, combined with great functionality, performance and design makes this a must for all lifting operations.

#### Size & Weight (excluding Antenna)

Height:	6.82 in (173mm)
Width:	8.27 in (210mm)
Depth:	3.39 in (86mm)
Weight:	7.5 lb (3,400g)



### BlokAlert Fob – 4-Button (60009) Part No. 7360009

The BlokAlert Fob allows the riggers to operate multiple BlokAlert systems across your site.

- Two four-button fobs per system
- Rugged design complete with neck lanyard
- Eight- and 16-button fobs available on request

## BLOKALERT ACCESSORIES



### BlokAlert Transmitter (BA-T2) Part No. 7370030

Through the use of a footswitch, the BlokAlert Transmitter gives the crane operator hand-free operation of the BlokAlert system.



### BlokAlert Footswitch (FS1) Part No. 7360017

The Footswitch provides the hands-free operation of the BlokAlert Transmitter. It is quick and easy to install.

More information, hook mounted safety system, and accessories available online at [thecrosbygroup.com/blokcam](https://thecrosbygroup.com/blokcam).



# BLOKALERT

Improving safety, communication & productivity